

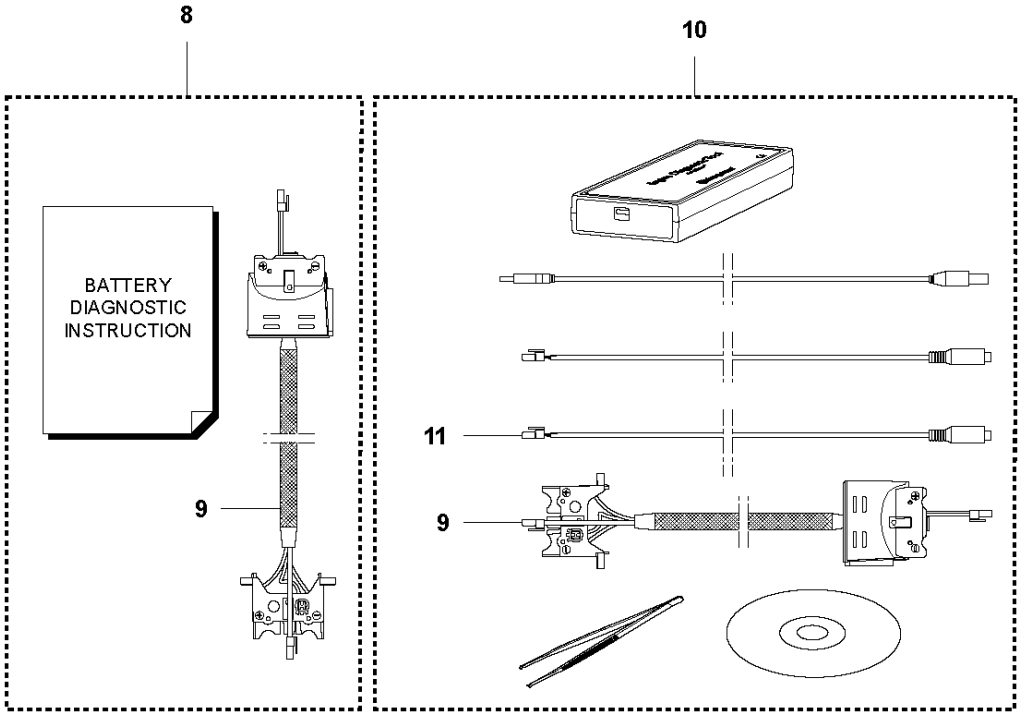
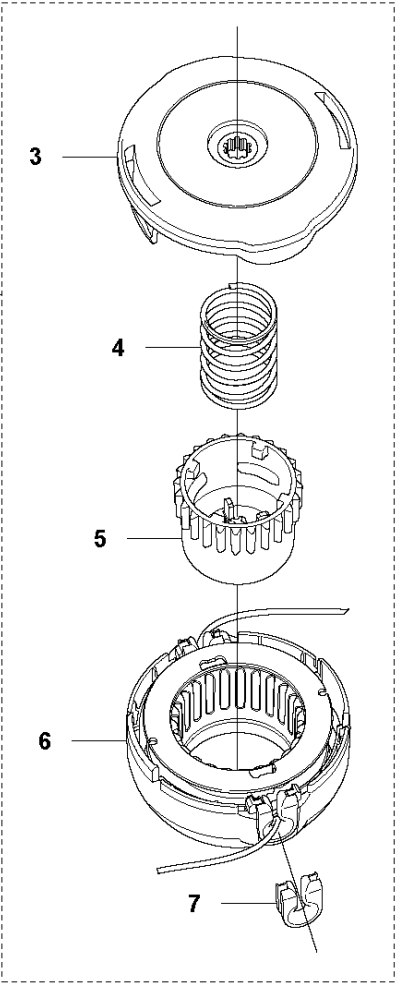
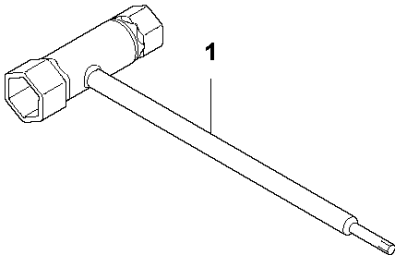


SPARE PARTS LIST

TRIMMERS/EDGERS

536LiL

F1 536 LiL / LiR
ACCESSORIES

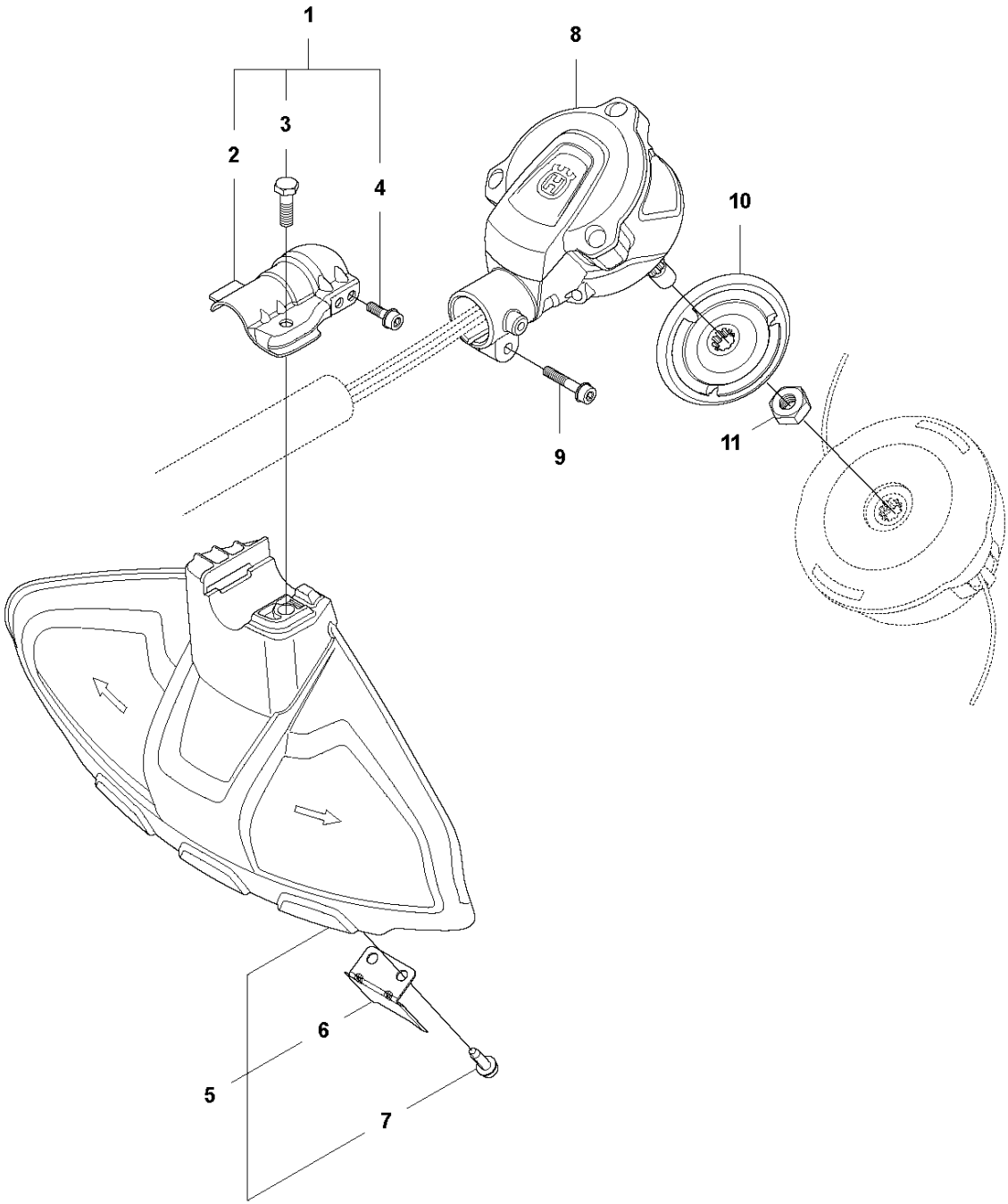


ACCESSORIES

536LiL

Ref	Part No	Description	Remark	QTY	KIT
1	501 68 89-01	SLEEVE TOOL		1	
2	579 29 40-01	TRIMMER HEAD		1	
3	578 19 68-01	HOUSING ASSY		1	2
4	577 05 03-01	SPRING		1	2
5	577 04 93-01	KNOB		1	2
6	578 19 69-01	COVER		1	2
7	501 33 04-01	GROMMET		2	
8	581 19 23-01	DIAGNOSTIC TOOL		1	
9	115 50 69-26	OPERATOR'S MANUAL		1	8
10	579 62 13-01	WIRING ASSY		1	8, 10
11	576 69 23-01	SERVICE TOOLS		1	

A 536 LiL / LiR
CUTTING

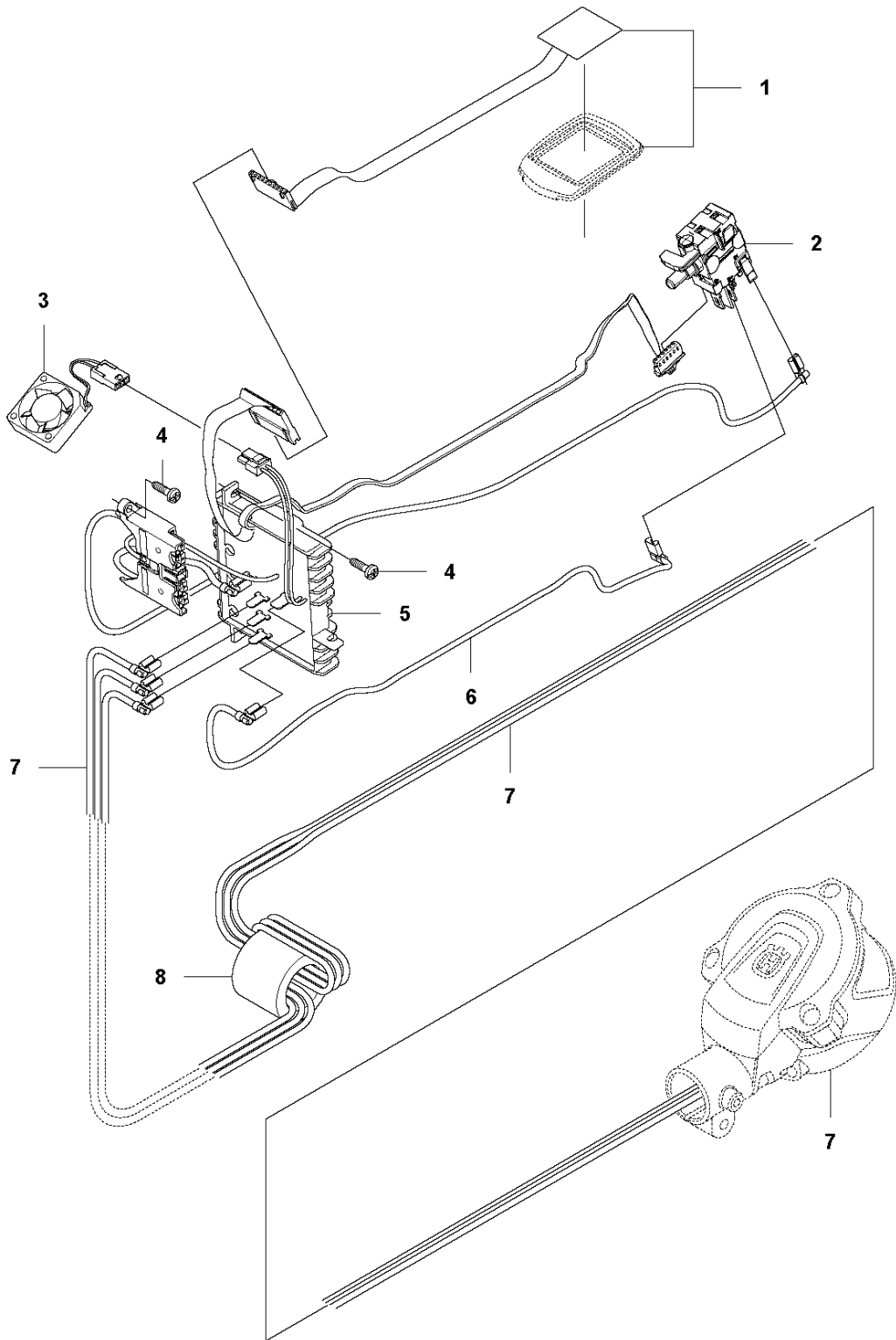


CUTTING EQUIPMENT

536LiL

Ref	Part No	Description	Remark	QTY KIT	
1	574 30 69-01	CLAMP		1	
2	503 93 55-01	CLAMP.GUARD		1	1
3	725 23 70-71	SCREW EHHM		1	1
4	503 20 14-12	SCREW IHSCFMO		1	1
5	577 01 83-02	TRIMMER SHIELD ASSY		1	
6	574 52 34-01	KNIFE		1	5
7	503 21 07-16	SCREW IHSCFT		2	5
8	577 02 21-02	MOTOR ASSY		1	
9	503 20 07-78	SCREW IHSCFM		1	
10	577 01 90-01	DRIVER ASSY		1	
11	578 78 93-01	NUT		1	

E1 536 LiL
ELECTRIC

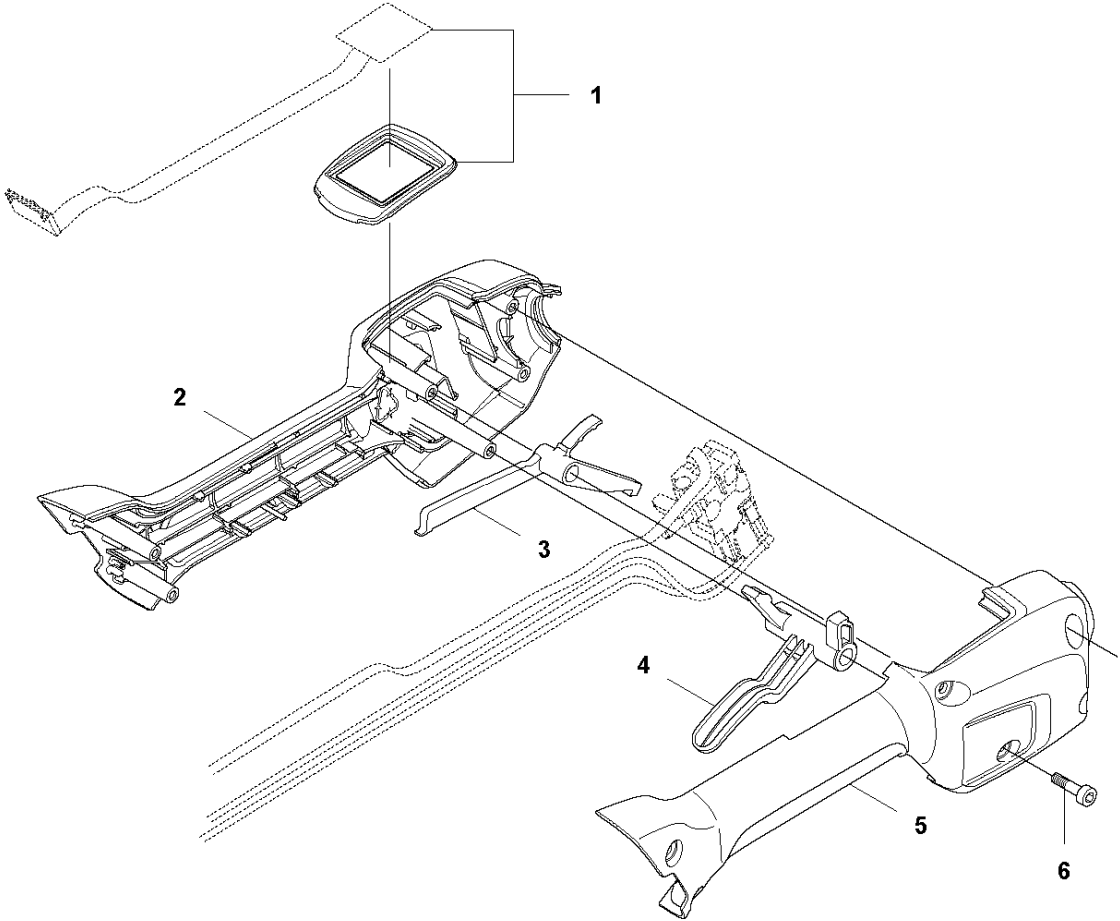


ELECTRICAL

536LiL

Ref	Part No	Description	Remark	QTY KIT
1	580 72 61-01	KEY PAD		1
2	577 03 38-01	TRIGGER SWITCH		1
3	577 86 37-01	FAN		1
4	503 21 28-13	SCREW CCRPANT		4
5	578 40 08-01	CONTROL UNIT		1
6	577 40 59-01	WIRING ASSY		1
7	577 02 21-02	MOTOR ASSY		1
8	577 97 66-01	FERRITE CORE		1

C1 536 LiL
HANDLE

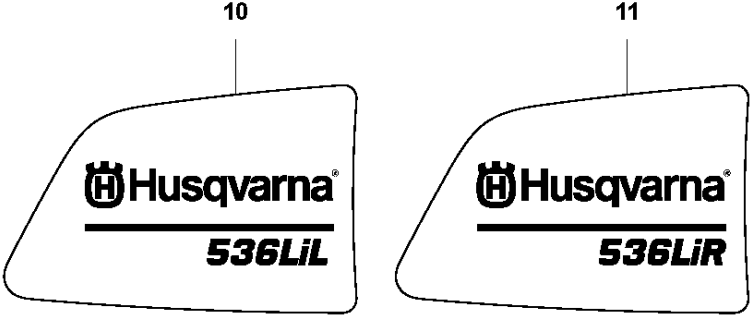
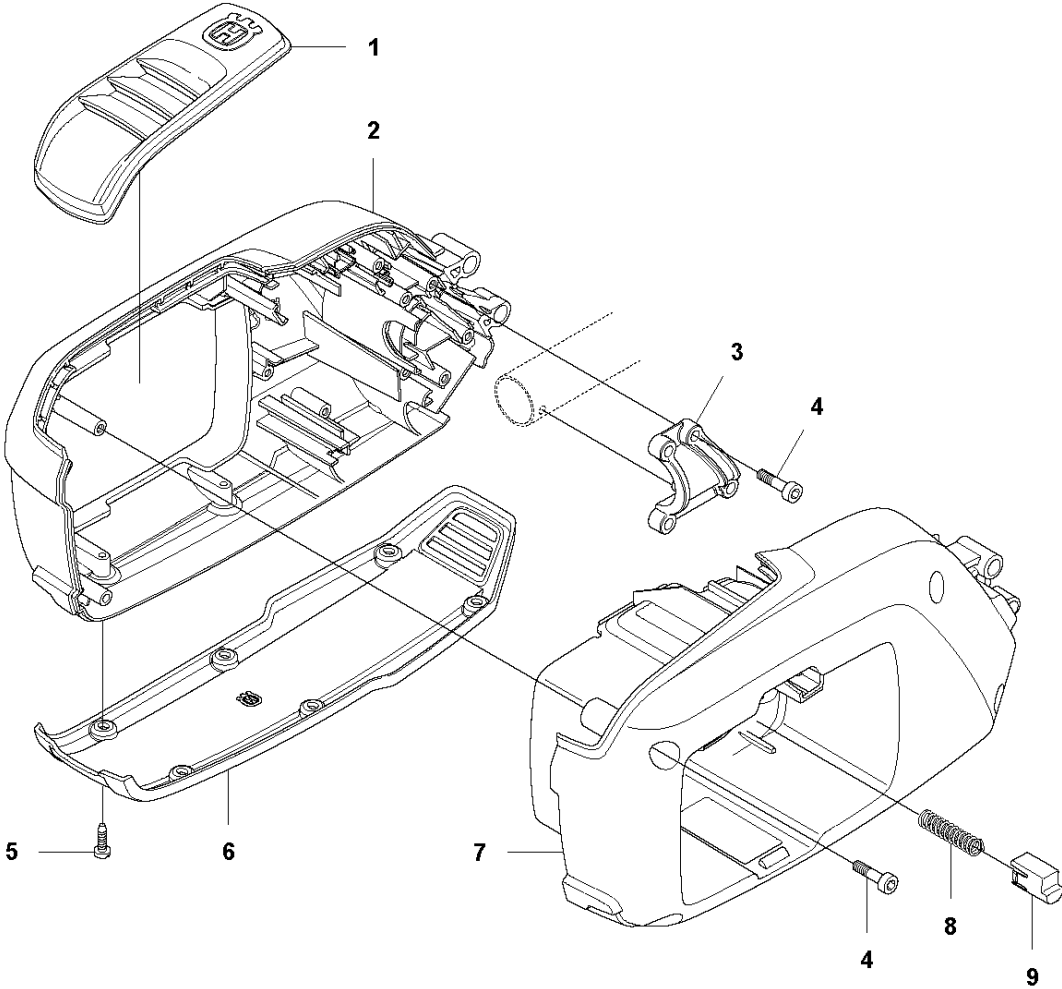


HANDLE

536LiL

Ref	Part No	Description	Remark	QTY KIT
1	580 72 61-01	KEY PAD		1
2	577 01 31-01	HANDLE HALF LEFT		1
3	577 51 23-01	THROTTLE LOCKOUT		1
4	577 01 81-01	TRIGGER		1
5	577 01 32-01	HANDLE HALF RIGHT		1
6	503 21 66-74	SCREW IH SCT		6

D 536 LiL / LiR
BATTERY HOUSING

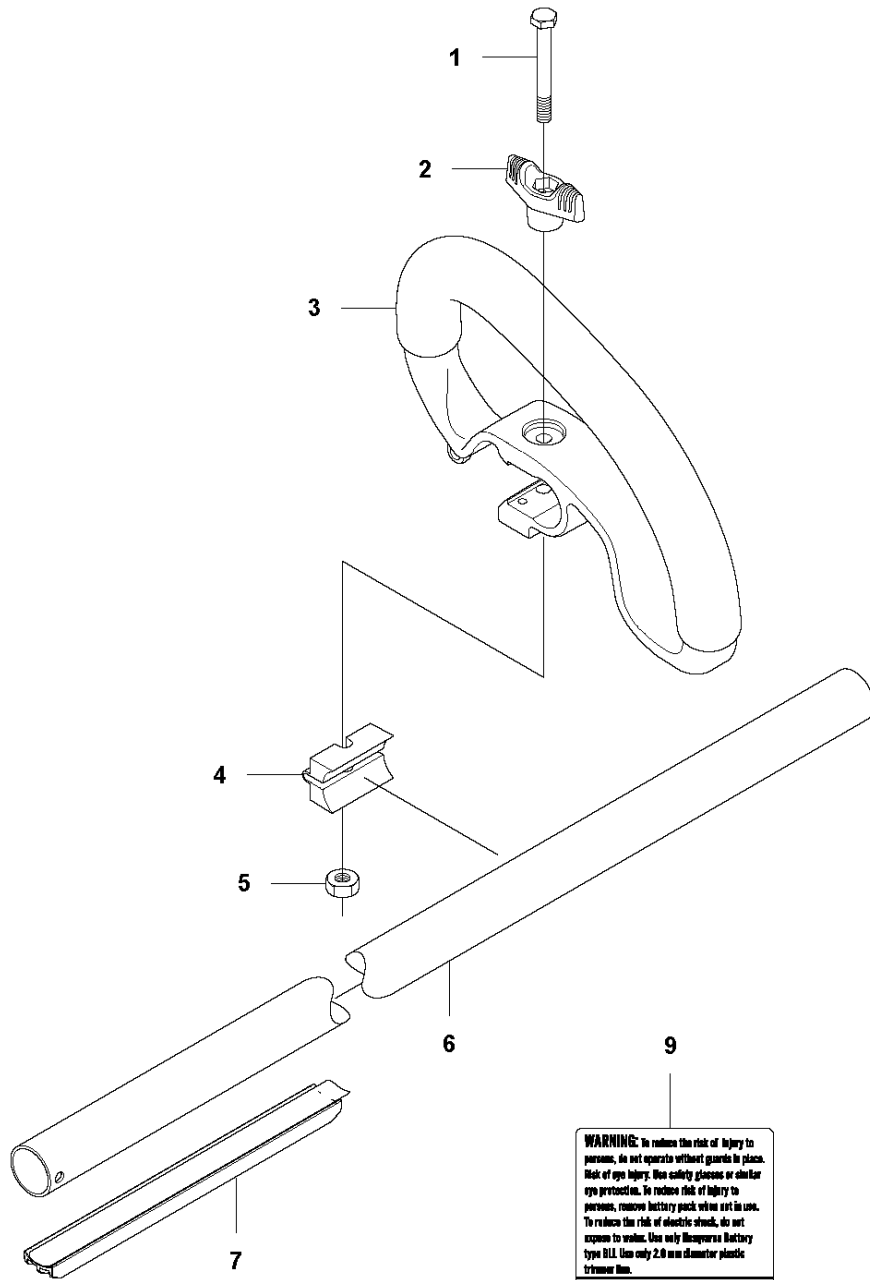


HOUSING

536LiL

Ref	Part No	Description	Remark	QTY KIT
1	577 01 41-01	COVER		1
2	577 00 76-01	HOUSING		1
3	577 02 22-01	CLAMP		1
4	503 21 66-74	SCREW IH SCT		8
5	503 21 28-13	SCREW CCRPANT		6
6	577 01 42-01	SKID PLATE		1
7	577 01 30-01	HOUSING RIGHT		1
8	577 99 65-01	SPRING		1
9	577 99 66-01	PUSH BUTTON		1
10	579 00 62-02	DECAL	536 LiL only	1
11	579 00 62-03	DECAL	536 LiR only	1

B 536 LiL / LiR
TUBE



ON1485
EUROPE 98dB
 EAC

WARNING: To reduce the risk of injury to persons, do not operate without guards in place. Risk of eye injury. Use safety glasses or similar eye protection. To reduce risk of injury to persons, remove battery pack when not in use. To reduce the risk of electric shock, do not expose to water. Use only Husqvarna Battery type D1L. Use only 2.0 mm diameter plastic trimmer line.

AVERTISSEMENT: Afin de réduire les risques de blessure, ne pas faire fonctionner l'outil que les guides de sécurité ne sont pas en place. Risque de blessure. Utilisez des lunettes de protection ou tout autre dispositif de protection des yeux. Afin de réduire les risques de blessure, retirez le batterie lorsque la machine n'est pas utilisée. Afin de réduire les risques de choc électrique, ne pas utiliser sur des surfaces mouillées. Utilisez uniquement des batteries Husqvarna de type D1L. Utilisez uniquement des fils de taille plastique de 2,0 mm de diamètre.

ADVERTENCIA: Para reducir el riesgo de producir daños a personas, no opere la unidad si los dispositivos no están en su lugar. Riesgo de daño ocular. Utilice gafas de seguridad o protección ocular similar. Para reducir el riesgo de producir chocs a personas, quite el conjunto de batería cuando la unidad no se encuentre en uso. Para reducir el riesgo de sufrir una descarga eléctrica, no exponga la unidad al agua. Utilice únicamente baterías Husqvarna tipo D1L. Utilice únicamente líneas plásticas de espesura de 2,0 mm de diámetro.

Australia NSW
67
NOISE dBA

TUBE

536LiL

Ref	Part No	Description	Remark	QTY KIT
1	725 23 80-51	SCREW EHHM	536LiL only	1
2	503 87 90-01	KNOB	536LiL only	1
3	503 87 19-06	HANDLE	536LiL only	1
4	503 94 03-01	SPACER	536LiL only	1
5	502 19 71-01	SQUARE NUT	536LiL only	1
6	577 06 14-01	TUBE		1
7	581 07 85-01	SPACER	536LiL only	1
8	579 00 88-02	DECAL		1
9	579 00 91-02	DECAL		1
10	501 97 16-03	LABEL		1

Illustrated Parts List - IPL Update



536LiL

Description of change

IPL Updates

Comments

Introduced from

Serial number / Date	Remark

IPL updates

Page Title	Ref. no	New part no	Name	Excl. part no.	Remark
E1 Electric 536LiL/536LiR	7	577 02 21-02	Motor Assy	577 02 21-01	
A Cutting 536LiL/LiR	5	577 01 83-02	Trim Shield Assy	577 01 83-01	
A Cutting 536LiL/LiR	6				QTY changed, was 2, now 1.
A Cutting 536LiL/LiR	7				QTY changed, was 4, now 2.
A Cutting 536LiL/LiR	8	577 02 21-02	Motor Assy	577 02 21-01	
B Tube 536LiL/LiR	6	577 06 14-01	Tube	579 63 78-02	
B Tube 536LiL/LiR	7	581 07 85-01	Spacer	577 06 14-01	
B Tube 536LiL/LiR	9	579 00 91-02	Decal		New pos no
B Tube 536LiL/LiR	10	501 97 16-03	Label		New pos no
F1 Accessories 536LiL/LiR	8-14				Deleted. Pos number re- arranged